



EP10CA - EP14CA - EP15CA EP18CA - EP20CA - EP25CA

Preliminary Specifications

Electric powered lift trucks
4 wheel 48 V, 1.0 - 2.5 tonnes



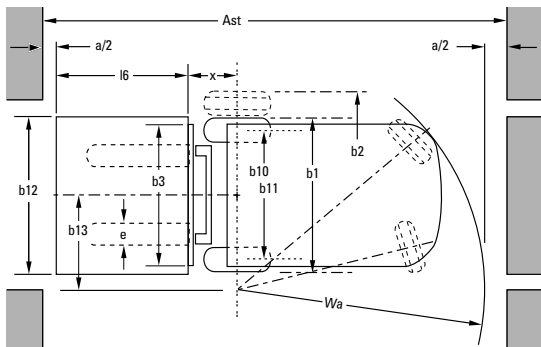
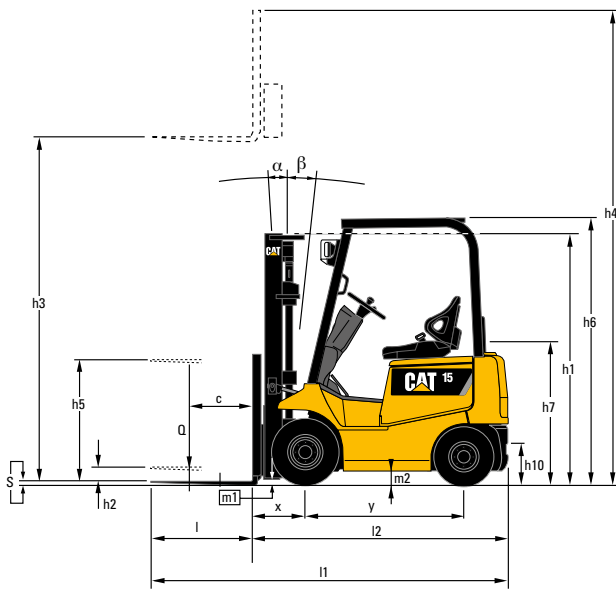
Characteristics			Cat Lift Trucks	Cat Lift Trucks
1.1	Manufacturer (abbreviation)		EP10CA	EP14CA
1.2	Manufacturer's model designation		Electric	Electric
1.3	Power source: (battery, diesel, LP gas, petrol)		Seated	Seated
1.4	Operator type: pedestrian, (operator)-standing, -seated			
1.5	Load capacity	Q (kg)	1000	1350
1.6	Load centre distance	c (mm)	500	500
1.8	Load distance, axle to fork face	x (mm)	420	420
1.9	Wheelbase	y (mm)	1250	1250
Weight				
2.1	Truck weight, without load / including battery (simplex mast, lowest lift height)	kg	2625	2760
2.2	Axle loading with maximum load, front/rear (simplex mast, lowest lift height)	kg	2970 / 655	3560 / 550
2.3	Axle loading without load, front/rear (simplex mast, lowest lift height)	kg	1250 / 1375	1235 / 1525
Wheels, Drive Train				
3.1	Tyres: V=solid, L=pneumatic, SE=solid pneumatic - front/rear		L / L	L / L
3.2	Tyre dimensions, front		21x8-9-16PR	21x8-9-16PR
3.3	Tyre dimensions, rear		5.00-8-8PR	5.00-8-8PR
3.5	Number of wheels, front/rear (x=driven)		2x / 2	2x / 2
3.6	Track width (centre of tyres), front	b10 (mm)	900	900
3.7	Track width (centre of tyres), rear	b11 (mm)	900	900
Dimensions				
4.1	Mast tilt, forwards/backwards	α/β °	6 / 12	6 / 12
4.2	Height with mast lowered (see tables)	h1 (mm)	1975	1975
4.3	Free lift (see tables)	h2 (mm)	115	115
4.4	Lift height (see tables)*	h3 (mm)	2965	2965
4.5	Overall height with mast raised	h4 (mm)	4015	4015
4.7	Height to top of overhead guard	h6 (mm)	2110	2110
4.8	Seat height	h7 (mm)	1090	1090
4.12	Tow coupling height	h10 (mm)	280	280
4.19	Overall length	l1 (mm)	3090	3090
4.20	Length to fork face (includes fork thickness)	l2 (mm)	2020	2020
4.21	Overall width	b1/b2 (mm)	1090	1090
4.22	Fork dimensions (thickness, width, length)	s, e, l (mm)	35x100x1070	35x100x1070
4.23	Fork carriage to DIN 15 173 A/B/no		2A	2A
4.24	Fork carriage width	b3 (mm)	920	920
4.31	Ground clearance under mast, with load	m1 (mm)	95	95
4.32	Ground clearance at centre of wheelbase, with load (forks lowered)	m2 (mm)	110	110
4.33	Working aisle width with 1000 x1200 mm pallets, crosswise	Ast (mm)	3415	3415
4.34a	Working aisle width with 800 x1200 mm pallets, lengthwise	Ast (mm)	3615	3615
4.35	Turning circle radius	Wa (mm)	1795	1795
4.36	Minimum distance between centres of rotation	b13 (mm)	575	575
Performance				
5.1	Travel speed, with/without load	km/h	14 / 16	14 / 16
5.2	Lifting speed, with/without load	m/s	0.37 / 0.54	0.34 / 0.54
5.3	Lowering speed, with/without load	m/s	0.50 / 0.50	0.50 / 0.50
5.5	Rated drawbar pull, with/without load	N	N/A / 3527	N/A / 3607
5.6	Maximum drawbar pull, with/without load (3 min short duty)	N	N/A / 8170	N/A / 8474
5.7	Gradeability, with/without load	%	9 / 13.5	8 / 12.8
5.8	Maximum gradeability, with/without load	%	22 / 25	20 / 25
5.9	Acceleration time (10 metres) with/without load	s	4.7 / 4.3	4.9 / 4.4
5.10	Service brakes (mechanical/hydraulic/electric/pneumatic)		Hydraulic	Hydraulic
Electric motors				
6.1	Drive motor capacity (60 min. short duty)	kW	9	9
6.2	Lift motor output at 15% duty factor	kW	9.5	9.5
6.3	Battery to DIN 43 531/35/36 A/B/C/no		-	-
6.4	Battery voltage/capacity at 5-hour discharge	V /Ah	48V / 340Ah	48V / 340Ah
6.5	Battery weight	kg	560	560
6.6	Energy consumption according to VDI 60 cycle	kWh/h	N/A	N/A
Miscellaneous				
8.1	Type of drive control		FET	FET
8.2	Operating pressure for attachments	bar	137	137
8.3	Oil flow for attachments	l/min	50	50
8.4	Noise level, value at operator's ear (EN 12053)	dB(A)	< 75	< 75
8.5	Towing coupling design / DIN type, ref.		N/A	N/A

* Excluding fork thickness



	Cat Lift Trucks	Cat Lift Trucks	Cat Lift Trucks	Cat Lift Trucks
	EP15CA	EP18CA	EP20CA	EP25CA
	Electric	Electric	Electric	Electric
	Seated	Seated	Seated	Seated
	1500	1750	2000	2500
	500	500	500	500
	420	420	435	435
	1250	1250	1400	1400
	2850	3025	3570	4120
	3835 / 515	4250 / 525	4915 / 655	5690 / 930
	1255 / 1595	1240 / 1785	1580 / 1990	1525 / 2595
	L / L	L / L	L / L	L / L
	21x8-9-16PR	21x8-9-16PR	23x9-10-16PR	23x9-10-16PR
	5.00-8-8PR	5.00-8-8PR	18x7-8-14PR	18x7-8-14PR
	2x / 2	2x / 2	2x / 2	2x / 2
	900	900	955	955
	900	900	945	940
	6 / 12	6 / 12	6 / 12	6 / 12
	1975	1975	1995	1995
	115	115	140	140
	2965	2965	2960	2960
	4015	4015	4000	4000
	2110	2110	2110	2110
	1090	1090	1090	1090
	280	280	290	290
	3090	3130	3305	3390
	2020	2060	2235	2320
	1090	1090	1175	1175
	35x100x1070	35x100x1070	40x122x1070	40x122x1070
	2A	2A	2A	2A
	920	920	1000	1000
	95	95	95	95
	110	110	110	110
	3415	3445	3685	3755
	3615	3645	3885	3955
	1795	1825	2050	2120
	575	575	640	640
	14 / 16	13.5 / 15.5	14 / 16	13.5 / 15.5
	0.32 / 0.54	0.31 / 0.54	0.28 / 0.47	0.26 / 0.47
	0.50 / 0.50	0.50 / 0.50	0.50 / 0.50	0.50 / 0.50
	N/A / 3586	N/A / 3564	N/A / 5148	N/A / 5113
	N/A / 8501	N/A / 8410	N/A / 10863	N/A / 10940
	7.5 / 12.4	6.7 / 11.5	8.5 / 14.2	7 / 12.3
	19 / 25	17 / 23	19 / 25	16 / 20
	5.0 / 4.4	5.2 / 4.5	4.8 / 4.3	5.1 / 4.5
	Hydraulic	Hydraulic	Hydraulic	Hydraulic
	9	9	10	10
	9.5	9.5	9.5	12
	-	-	-	-
	48V / 435Ah	48V / 435Ah	48V / 475Ah	48V / 565Ah
	665	665	735	870
	N/A	N/A	N/A	N/A
	FET	FET	FET	FET
	137	157	157	172
	50	50	55	55
	< 75	< 75	< 75	< 75
	N/A	N/A	N/A	N/A





$Ast = Wa + x + l6 + a$
 $Ast =$ Working aisle width with load
 $a =$ Safety clearance (200 mm)
 $l6 =$ Pallet length (800 or 1000 mm)
 $b12 =$ Pallet width (1200 mm)

Lower Cost of Ownership

- Advanced AC motor technology provides high torque, faster acceleration, better ramp performance and smooth, quiet, controlled operation.
- AC controller provides optimum performance and energy efficiency.
- Auto power-off mode automatically shuts off forklift after truck remains unused after 15 minutes.
- 4 modes of Regenerative braking increase battery life, productivity, and performance whilst reducing brake wear.
- The easy access to control panel, traction and hydraulic motors reduces servicing time and effort.
- Self-diagnostic function display icon or message, including fault history folder, allows operator and service engineer to facilitate maintenance.

Unmatched Productivity

- Electric Power Steering System with speed compensation as standard for effortless maneuverability.
- Vacuum Fluorescent Display (VFD) instrumentation panel keeps driver informed of truck hours and state of battery, even in bright daylight.
- Compact chassis dimensions contribute to supreme maneuverability in tight right-angled stacking aisles.

Safety and Ergonomics

- High visibility mast and overhead guard.
- Back up alarm supplied as standard.
- New generation AC controller ensures lowest noise level in its class.
- Neutral start safety function to prevent unintentional movement of the truck.
- Ergonomically designed operator's compartment features a full suspension seat, adjustable steering column and comfortably placed hydraulic control levers.
- Low footstep and well-placed grab bar makes on/off access easy, even in repetitive situations.
- Controlled roll down and excellent ramp performance allow safe and efficient operation.

Options

- Lift height selector
- Cold storage specification
- Laser pointer
- Side shifter
- Rust resistance upgrade

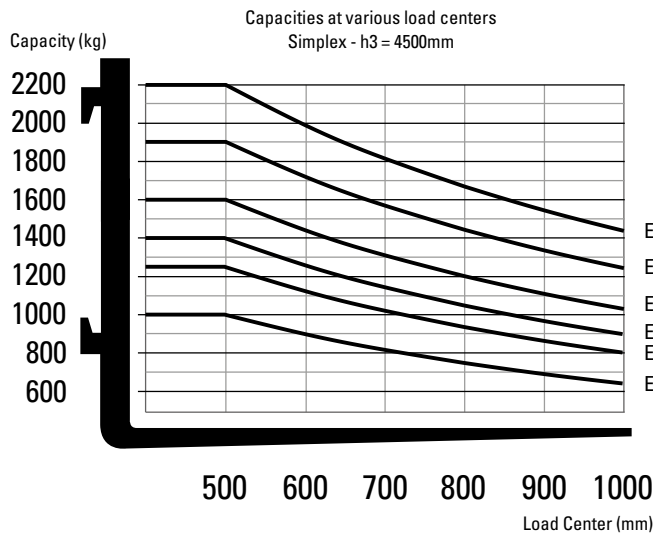
Cat Lift Trucks is renowned for its worldwide distribution network, but you will always find an experienced and dedicated team of professionals close to you. Individuals committed to helping you maximise profits. With Cat Lift Trucks, your investment is in safe hands.

Mast Type	EP20CA / EP25CA					EP20CA		EP25CA	
	h3 mm	h1 mm	h4 mm	h2/h5* mm	Tilt Angle (fwd-rev)	Q @ c = 500mm kg Pneumatic tyre	Q @ c = 500mm kg Solid tyre(s)	Q @ c = 500mm kg Pneumatic tyre	Q @ c = 500mm kg Solid tyre(s)
Simplex	3000	1995	4000	140	6°-12°	2000	2000	2500	2500
	3300	2145	4300	140	6°-12°	2000	2000	2500	2500
	3500	2245	4500	140	6°-12°	2000	2000	2500	2500
	3700	2345	4700	140	6°-12°	2000	2000	2500	2500
	4000	2545	5000	140	6°-12°	2000	2000	2500	2500
	4500	2795	5500	140	4°-6°	1900	1900	2200	2350
Duplex	3000	1980	4000	980	6°-12°	2000	2000	2500	2500
	3300	2130	4300	1130	6°-12°	2000	2000	2500	2500
	3500	2230	4500	1230	6°-12°	2000	2000	2500	2500
	3700	2330	4700	1330	6°-12°	2000	2000	2500	2500
	4000	2480	5000	1480	6°-12°	2000	2000	2500	2500
	4500	2830	5500	1830	4°-6°	1900	1900	2200	2350
Triplex	3700	1830	4700	830	4°-6°	2000	2000	2500	2500
	4000	1880	5000	880	4°-6°	1950	1950	2400	2400
	4300	1980	5300	980	4°-6°	1900	1900	2300	2350
	4500	2080	5500	1080	4°-6°	1800	1850	2200	2250
	4700	2130	5700	1130	4°-6°	1700	1800	2000	2200
	5000	2230	6000	1230	4°-6°	1600	1750	1750	2150
	5500	2430	6500	1430	4°-6°	1200	1650	1300	2050
	6000	2680	7000	1680	1.5°-6°	900	1550	1000	1700
	6500	2830	7500	1830	1.5°-6°	600	1250	700	1400
7000	3080	8000	2080	1.5°-6°	400	1000	450	1150	

*h5 including load backrest (increase without load backrest is 370 mm (duplex and triplex)).

Battery Dimensions

Battery compartment	EP10CA	EP14CA	EP15CA	EP18CA	EP20CA	EP25CA
Length (mm)	970	970	970	970	970	970
Width (mm)	600	600	600	600	664	730
Height (mm)	470	470	470	470	470	470
Min. Battery Weight (kg)	560	560	665	665	735	870



EP25CA
EP20CA
EP18CA
EP15CA
EP14CA
EP10CA



Mast Performance and Capacity

- h1 Height with mast lowered
- h2 Standard free lift
- h3 Lift height
- h4 Height with mast raised
- h5 Full free lift
- Q Lifting capacity, rated load
- c Load centre (distance)

Cat® Lift Trucks.

Your partner in materials handling.

Mast Type	EP10CA - 18CA					EP10CA		EP14CA		EP15CA		EP18CA	
	h3	h1	h4	h2/h5*	Tilt Angle	Q @ c = 500mm kg Pneumatic tyre	Q @ c = 500mm kg Solid tyre(s)	Q @ c = 500mm kg Pneumatic tyre	Q @ c = 500mm kg Solid tyre(s)	Q @ c = 500mm kg Pneumatic tyre	Q @ c = 500mm kg Solid tyre(s)	Q @ c = 500mm kg Pneumatic tyre	Q @ c = 500mm kg Solid tyre(s)
Simplex	3000	1975	4015	110	6°-12°	1000	1000	1350	1350	1500	1500	1750	1750
	3300	2125	4315	110	6°-12°	1000	1000	1350	1350	1500	1500	1750	1750
	3500	2225	4515	110	6°-12°	1000	1000	1350	1350	1500	1500	1750	1750
	3700	2325	4715	110	6°-12°	1000	1000	1350	1350	1500	1500	1750	1750
	4000	2525	5015	110	6°-12°	1000	1000	1350	1350	1500	1500	1750	1750
	4500	2775	5515	110	4°-6°	1000	1000	1250	1300	1400	1450	1600	1650
Duplex	5000	3035	6015	110	4°-6°	950	950	1150	1200	1300	1350	1450	1550
	3000	1975	4015	980	6°-12°	1000	1000	1350	1350	1500	1500	1750	1750
	3300	2125	4315	1130	6°-12°	1000	1000	1350	1350	1500	1500	1750	1750
	3500	2225	4515	1230	6°-12°	1000	1000	1350	1350	1500	1500	1750	1750
	3700	2325	4715	1330	6°-12°	1000	1000	1350	1350	1500	1500	1750	1750
Triplex	4000	2525	5015	1480	6°-12°	1000	1000	1350	1350	1500	1500	1750	1750
	3700	1775	4715	830	4°-6°	1000	1000	1350	1350	1500	1500	1750	1750
	4000	1875	5015	880	4°-6°	950	950	1250	1300	1450	1450	1700	1700
	4300	1975	5315	980	4°-6°	930	930	1200	1250	1400	1400	1600	1600
	4500	2045	5515	1080	4°-6°	900	900	1150	1200	1350	1350	1500	1550
	4700	2125	5715	1130	4°-6°	870	870	1100	1150	1300	1330	1450	1500
	5000	2225	6015	1230	4°-6°	850	850	1050	1100	1200	1300	1300	1450
	5500	2415	6515	1430	4°-6°	750	850	850	1100	1070	1250	1100	1400
	6000	2595	7015	1680	1.5°-6°	600	800	650	1050	850	1100	870	1250
	6500	2835	7515	1830	1.5°-6°	-	-	-	-	400	750	450	850
7000	3035	8015	2080	1.5°-6°	-	-	-	-	250	550	300	600	

*h5 including load backrest (increase without load backrest is 305 mm (duplex) or 465 mm (triplex)).



info@catliftruck.com
www.catliftruck.com

CESC1755AME-T(02/16)

©2016, MCFE. All rights reserved.

MCFE. All Rights Reserved. CAT, CATERPILLAR, BUILT FOR IT, their respective logos, "Caterpillar Yellow," the "Power Edge" trade dress as well as corporate and product identity used herein, are trademarks of Caterpillar and may not be used without permission.

Printed in The Netherlands.

NOTE: Performance specifications may vary depending on standard manufacturing tolerances, vehicle condition, types of tyres, floor or surface conditions, applications, or operating environment. Trucks may be shown with non-standard options. Specific performance requirements and locally available configurations should be discussed with your Cat lift trucks Dealer. Cat Lift Trucks follows a policy of continual product improvement. For this reason, some materials, options and specifications could change without notice.

